



## SPECIFICATION SHEET

### SafeMat Ground Protection

# SPECIFICATION SHEET

## SafeMat Ground Protection



### PRODUCT DESCRIPTION >

The SafeMat is the go-to for safety and durability when it comes to ground protection at temporary access sites.

Depending on ground conditions, it is able to withstand loads of 120 tonnes! Remarkably easy to handle and install, these ground protection mats feature six holes for manoeuvrability as well as robust hole connectors and connection pads for pairing with other mats.

The surface boasts superb grip with a specially engineered "non-slip" design. Ideal for outdoor events such as festivals, these mats are equally at home on construction and groundwork sites.

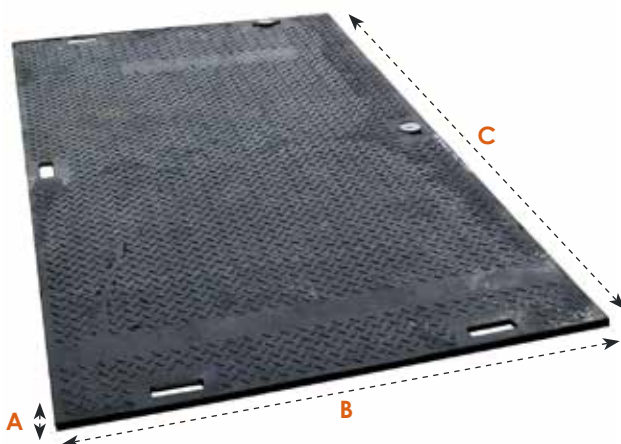
### SAFEMAT SPEC >

Length	Width	Depth	Weight
2400mm	1200mm	15mm	45kg

### KEY FEATURES >

- Manual handling made easy by the six pre moulded hand holes
- 120+ tonne maximum weight loading (depending on ground conditions)
- Industry leading nut, screw & washer system securely locks each mat into place
- Unique 'non-slip' surface optimizes grip, and includes additional pedestrian surface
- Reverse of mat is ideal for fork lifts and many other lighter vehicles
- Hand holes double up as method of connection
- Helps maintain Health & Safety standards
- Prevents vehicles becoming bogged down
- Cost effective handling and transportation costs

### SAFEMAT VISUAL APPEARANCE >



### DIMENSIONS >

A. 15mm - B. 1200mm - C. 2400mm

# SPECIFICATION SHEET

## SafeMat Ground Protection Continued



### PRODUCT DESCRIPTION >

Lightweight meets heavy duty: The SafeMat offers unbeatable stability for a broad range of uses, from ensuring safe access for workers and the public to offering a stable surface for heavy machinery.

All SafeMats have passed a rigorous testing process and can deal with huge loads of up to 120 tonnes in most ground conditions. The tough polythylene material (HDPE) is 100% recycled and extremely durable.

A special tread pattern on the road mat's surface allows for safe heavy duty manoeuvrability. Each mat features a simple Metal Hand Connector system with multiple interlocking sides for quick and safe pairing with other ground protection mats.

With less transport costs due to the mats' light weight, and cleverly positioned hand holes for loading off pallets or trucks, the SafeMat is an excellent investment.

### SAFEMAT KEY FEATURES >



- ▀ SafeMats have a highly engineered, 'non-slip' surface, this substantially improves the grip and reduces side way slippage, even in the most challenging weather or ground conditions.
- ▀ SafeMats can be connected together using our simple yet effective metal hand connector system.
- ▀ SafeMats can be customized with either a company logo and telephone number or even produced in corporate colours - subject to minimum order quantity.





# SPECIFICATION SHEET

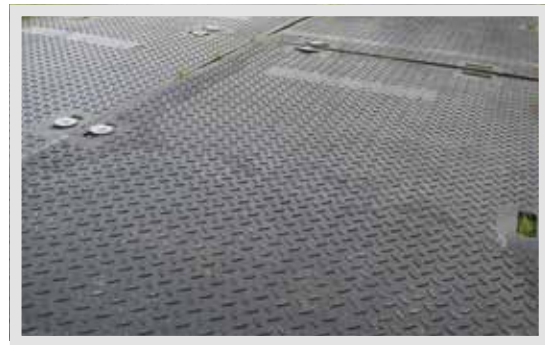
## SafeMat Technical Overview



### TECHNICAL DETAILS >



Multi-Sided Interlocking Mats



Quickly Cover Large Areas



Machinery / Pedestrian Tread Pattern



Heavy Duty Vehicle Tread Pattern